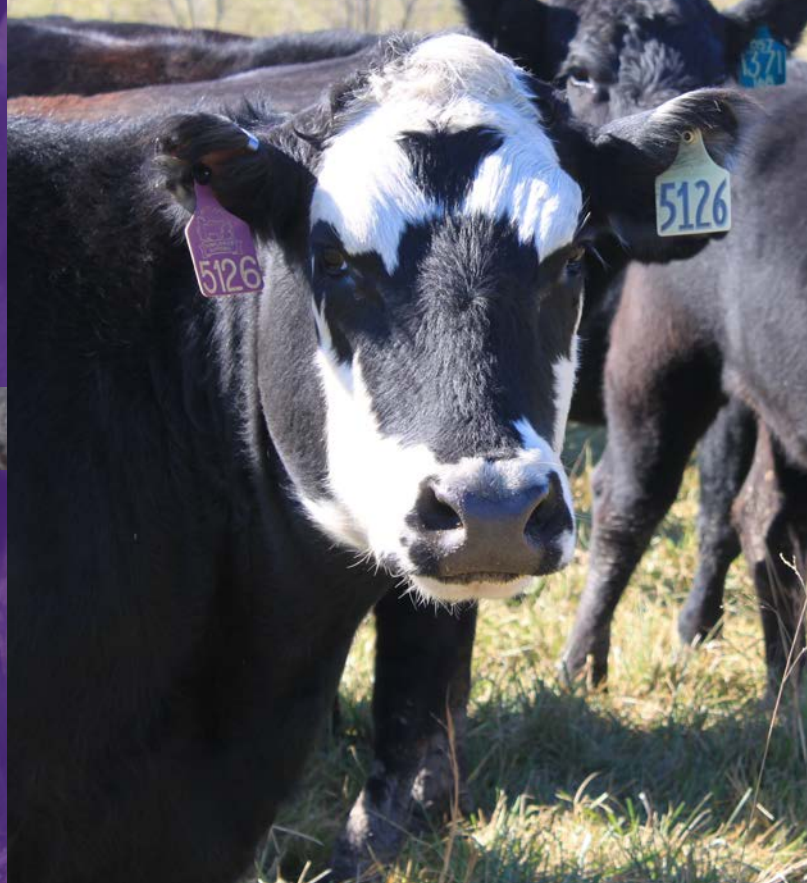


Cattle Reproduction Workshop Series



February 15, 2018
5:30 pm – 8:30 pm
Grace Community Church
310 East 8th St.
Overbrook, KS

RSVP to Roberta Wyckoff by February 12th at 785-843-7058 or
rwyckoff@ksu.edu or online at <https://tinyurl.com/CattleRepro>

Economics of Beef Cattle Reproduction

- Reproductive Management to improve profitability: Are you leaving money on the table?
- Dinner
- Making a transition to a shorter calving period
- Using your Phone- Beef Apps
- Pregnancy Testing: Why, When and How?

Speakers:

Sandy Johnson, KSU Extension
Beef Production Specialist

Dr. Bob Larsen, DVM Beef
Cattle Institute

Save the Date for 2nd Workshop
AI Refresher

March 29, 2018 6:00 pm
May-Way Farms
1273 N. 650 Rd.
Baldwin City, KS 66006



K-STATE
Research and Extension

Douglas County
Frontier District

Kansas State University is committed to making its services, activities and programs accessible to all participants. If you have special requirements due to a physical, vision, or hearing disability, contact Roberta Wyckoff at 785-843-7058
Kansas State University Agricultural Experiment Station and Cooperative Extension Service
K-State Research and Extension is an equal opportunity provider and employer.